

**NOTES:**

1. ASSEMBLY MUST BE TESTED BY A CERTIFIED TESTER UPON COMPLETION OF INSTALLATION.
2. FOR INSTALLATION IN A BASEMENT OR AGAINST A WALL CONTACT THE CITY'S CROSS-CONNECTION COORDINATOR.
3. AS OF 2010, NEW BACKFLOW INSTALLATIONS OR REPLACEMENT MUST BE LEAD-FREE.
4. ASSEMBLY MUST BE APPROVED BY THE FOUNDATION FOR CROSS CONNECTION CONTROL AND HYDRAULIC RESEARCH AT THE UNIVERSITY OF SOUTHERN CALIFORNIA.
5. BACKFLOW PREVENTION DEVICES SHALL BE INSTALLED IN A MANNER PRESCRIBED IN SECTION 7603. TITLE 22 OF THE CALIFORNIA ADMINISTRATIVE CODE.
6. NO BACKFLOW DEVICE SHALL BE REMOVED WITHOUT PRIOR APPROVAL FROM THE CITY OF BRAWLEY.



# CITY OF BRAWLEY

DEPARTMENT OF PUBLIC WORKS

TITLE:

BACKFLOW ASSEMBLY  
INSTALLATION GUIDELINES

SCALE:

N.T.S.

STD. DWG. NO.

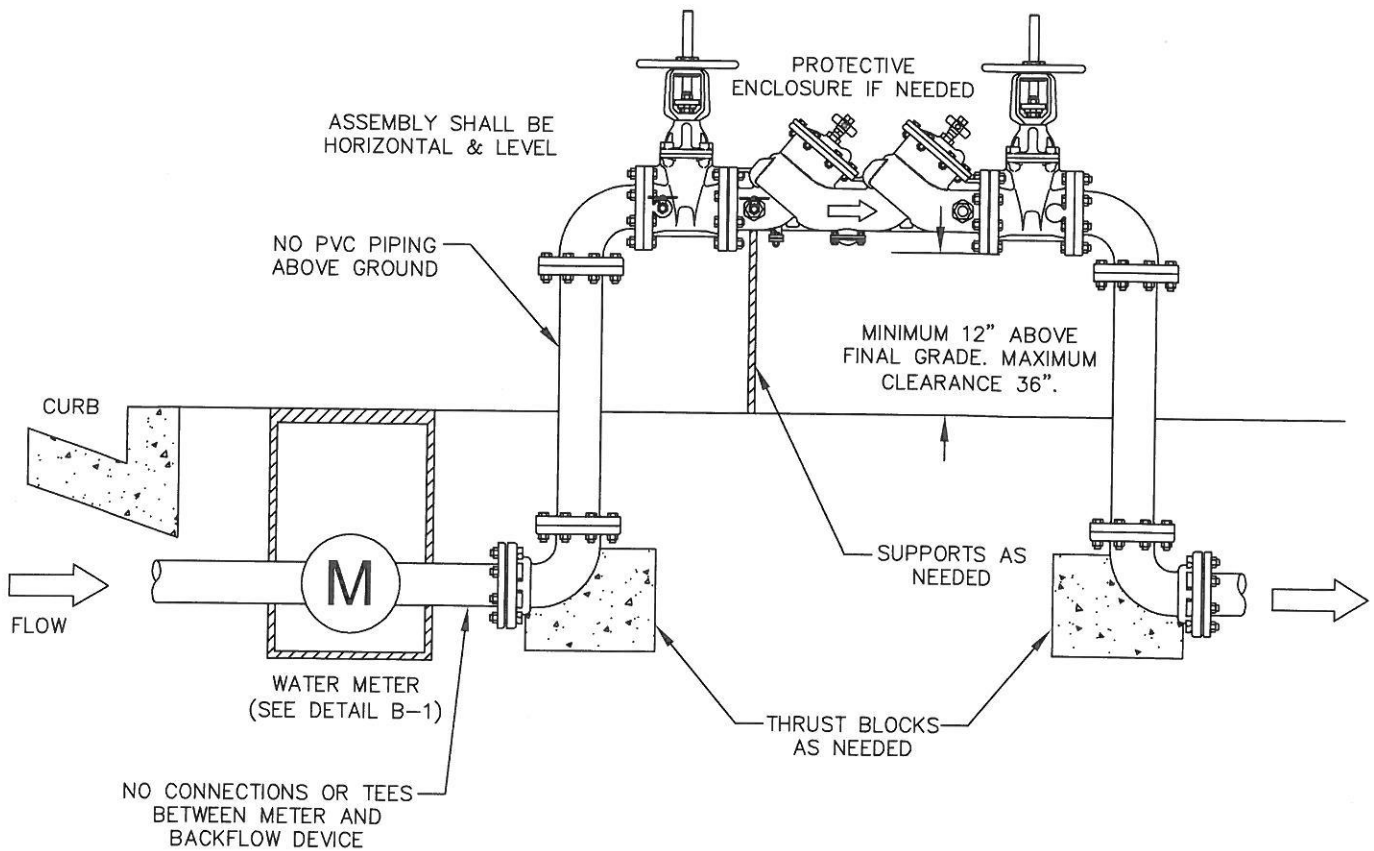
B-6

\*REDUCED PRESSURE PRINCIPLE  
ASSEMBLY (RP)

APPROVED CITY ENGINEER / YAZMIN ARELLANO, P.E.

DATE

*[Signature]* 10/23/2012



**NOTES:**

1. ASSEMBLY MUST BE TESTED BY A CERTIFIED TESTER UPON COMPLETION OF INSTALLATION.
2. FOR INSTALLATION IN A BASEMENT OR AGAINST A WALL CONTACT THE CITY'S CROSS-CONNECTION COORDINATOR.
3. AS OF 2010, NEW BACKFLOW INSTALLATIONS OR REPLACEMENT MUST BE LEAD-FREE.
4. ASSEMBLY MUST BE APPROVED BY THE FOUNDATION FOR CROSS CONNECTION CONTROL AND HYDRAULIC RESEARCH AT THE UNIVERSITY OF SOUTHERN CALIFORNIA.
5. BACKFLOW PREVENTION DEVICES SHALL BE INSTALLED IN A MANNER PRESCRIBED IN SECTION 7603. TITLE 22 OF THE CALIFORNIA ADMINISTRATIVE CODE.
6. NO BACKFLOW DEVICE SHALL BE REMOVED WITHOUT PRIOR APPROVAL FROM THE CITY OF BRAWLEY.



# CITY OF BRAWLEY

DEPARTMENT OF PUBLIC WORKS

TITLE:

BACKFLOW ASSEMBLY  
INSTALLATION GUIDELINES

SCALE:

N.T.S.

SEED DWG NO.

B-7

\*DOUBLE CHECK ASSEMBLY (DC)

APPROVED CITY ENGINEER / YAZMIN ARELLANO, P.E.

DATE

10/23/2012