

# Roles of the Government in the Planning Process



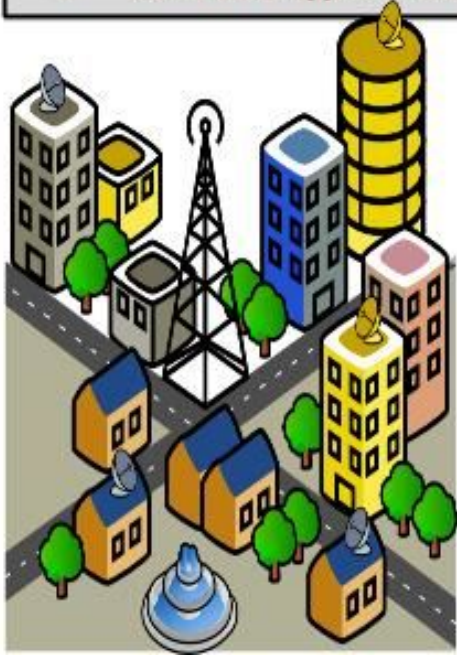
This chart has been formulated in order to help understand how the Governing bodies of the City of Brawley contribute to the Planning Process.

## City Council :

Evaluates staff analyses, recommendations by advisory bodies, and agency goals when making the final decision on land use plans and proposals.

## Planning Commission & Development Review Committee:

- Study planning staff analyses while keeping agency and policy goals in mind, along with community input on certain projects.
- Based on general government policies and specific circumstances make recommendations and decisions founded on “findings of fact”.
- Offer recommendations to governing bodies in regards to policy matters such as the general plan, zoning ordinances, and development agreements.
- Could act as appellate body on entitlement decisions.



## City Attorney:

- Advises officials on the legal process requirements for decision-making.
- Answer questions about applicable laws and how they apply to particular situations.
- Differentiates between legal and policy advice.
- Represents local government in legal issues and disputes.

## Planning Department Staff:

- Are the technical reference points to governing bodies, the planning commission, and other planning advisory bodies.
- Formulates and oversees local plans and ordinances.
- Develop local plans and maintain local ordinances.
- Detect the relevant local regulations that pertain to certain plan and project applications.
- Planning Staff organizes hearing and meetings regarding plans and project proposals as authorized by local officials.
- The Planning Department works with applicants to ensure that a project fulfills community policies and standards along with state and federal law.
- The Planning department brings together different departments within the city in order to generate commentary and technical recommendations in proposed plans or projects.
- Staff ensures the all proper actions are followed during the planning process.
- Prepare professional analysis and recommendations.
- In charge of monitoring implementation and compliance with planning policies and conditions of approval